

# Clanlike®

## STRONG-ARM



## 2.5 TONNE GARAGE JACK

Model No: CTJ2500QLG

PART NO: 7621802

## OPERATING & MAINTENANCE INSTRUCTIONS



---

## INTRODUCTION

---

Thank you for purchasing this CLARKE Garage Jack.

Before attempting to use this product, please read this manual throughout and follow the instructions carefully. Thoroughly familiarise yourself with this product & its operation in order to ensure the safety of yourself and others around you. In doing so, you can look forward to the product giving you long and satisfactory service.

## GUARANTEE

This product is guaranteed against faulty manufacture for a period of 12 months from the date of purchase. Please keep your receipt which will be required as proof of purchase. This guarantee is invalid if the product is found to have been abused or tampered with in any way, or not used for its intended purpose.

Faulty goods should be returned to their place of purchase, no product can be returned to us without prior permission. This guarantee does not effect your statutory rights.

---

## SPECIFICATION

---

Feature	Specification
Weight	25.6 kg
Dimensions (L x W x H ) without handle	603 x 305 x 230 mm
Rated Load	2500 Kg
Min Height of Saddle	100 mm
Max Height of Saddle	465 mm
Oil Capacity	0.19 litre
No of Strokes from Min to Max Height	5.5 (with no load)

Please note that details and specifications contained herein, are correct at the time of going to print. However, CLARKE International reserve the right to change specifications at any time without prior notice.

---

# GENERAL SAFETY PRECAUTIONS

---

## GENERAL

1. ALWAYS read and ensure you fully understand the following precautions and the hazards associated with this product. Do not allow anyone who has not read these instructions to use the jack.
2. Only use this jack for its intended purpose.
3. NEVER carry out any modifications to this product. If experiencing difficulty of any kind consult your local dealer.

## WORK AREA

1. NEVER use the jack on sloping surfaces, only on level ground. The jack may move away slightly as soon as it lifts the tyre from the ground.
2. DO NOT start the vehicle engine with the jack in use.
3. This jack is for lifting only. DO NOT move a load using the jack as a dolly.
4. Ensure the load is taken by the full saddle and that the point of lift on the load is of sufficient strength to support the full load adequately.
5. Never allow children or bystanders in the area while the jack is in use.
6. NEVER work underneath a vehicle supported only by this product. If working under a vehicle, always use stands designed for the purpose.
7. Ensure the jack is on a firm solid base and that there is no likelihood of it slipping when under load.
8. Ensure that all personnel are well clear of a load being raised or lowered.

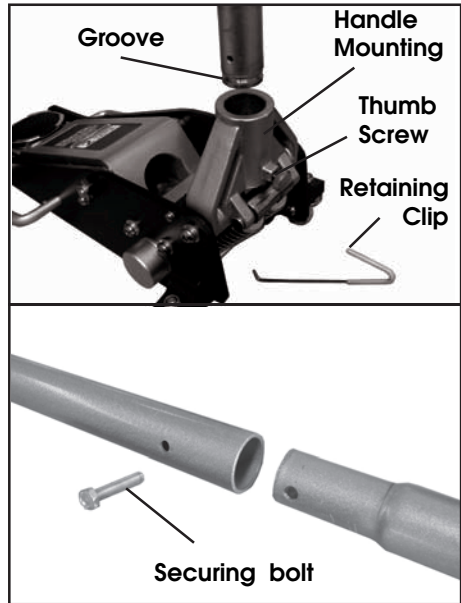
## SERVICING & REPAIRS

1. Check the jack for damage before use and do not use if damaged. If in doubt, DO NOT use. Consult your local dealer.
2. ALWAYS use spare parts supplied by Clarke International. Using non-standard parts could be extremely dangerous.
3. Ensure that the jack is properly maintained at all times and that no corrosion or other damage is allowed to weaken any part of it.
4. When necessary, have your jack serviced or repaired by a qualified technician using identical replacement parts. This will ensure that the safety of the jack is maintained.
5. NEVER use the jack if it has been subjected to excess load (over 2.5 tonne). The jack should be removed from service immediately and fully inspected by qualified personnel and passed as serviceable before further use.

**Please keep these instructions in a safe place for future reference.**

## UNPACKING AND ASSEMBLY

1. Remove the retaining clip, by pressing the handle mounting downwards and releasing the clip from the base of the jack and from the handle opening.
2. Undo the thumbscrew until the lower handle can be inserted fully into the handle socket.
  - The handle has a groove which should engage with the thumb screw once it is re-tightened.
  - The socket within the handle will engage with the jack control valve.
3. Re-tighten the thumb screw to secure the lower handle.
4. Add the upper handle by sliding it onto the lower handle and securing with the bolt provided.



## OPERATION

Before use, visually inspect the jack for oil leaks or any other sign of damage. Should any be apparent, have the jack inspected and repaired by a qualified technician.



**WARNING! NEVER WORK ON THE VEHICLE WHEN SUPPORTED BY A JACK. THIS IS A HIGHLY DANGEROUS PRACTICE. THE VEHICLE MUST BE SUPPORTED ON AXLE STANDS, OR SUITABLE SUPPORTS, BENEATH THE JACKING/SUPPORT POINTS RECOMMENDED BY THE VEHICLE MANUFACTURER. THERE SHOULD BE NO LOAD ON THE JACK.**

1. Ensure the vehicle to be raised is stable and on firm level ground with the wheels chocked.
2. Position the jack so that the saddle is directly beneath the lifting point.
  - Consult the vehicle handbook to determine suitable lifting points.
3. Engage the square socket in the end of the handle with the control valve (positioned within the handle mounting). Turn clockwise to close the valve.
4. Pump the handle to raise the saddle until it reaches the vehicle lifting point.

5. Take care that no obstruction prevents a clean lift. Keep all personnel at a safe distance before pumping the handle to lift the vehicle.

**NOTE: The jack may move slightly during operation. It is important therefore, that the floor is clean and completely free from debris.**

6. Position axle stands directly beneath suitable supporting points on the vehicle, and very gently twist the handle anticlockwise.
  - This will open the control valve to lower the load onto the stands.
7. To stop it lowering at any point, turn the handle clockwise again. Always avoid a rapid descent by turning the handle slowly.
8. Carefully lower the vehicle onto the axle stand, checking constantly, preferably with an assistant, that the vehicles supporting point rests snugly and cleanly on the stand, and that the supporting stand is stable before all the weight is taken.

**NOTE: Ensure this operation is carried out under complete control. DO NOT allow the load to drop suddenly as this could damage internal parts.**

9. Completely remove the jack from the vehicle.

---

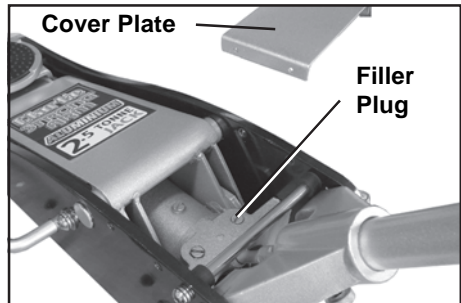
## MAINTENANCE

---

### PURGING AIR FROM THE SYSTEM

If air bubbles become trapped inside the hydraulic system, the efficiency of the jack will be reduced. Air can be purged from the system as follows.

1. Use the handle to turn the control valve counter-clockwise, relieving the pressure within the jack, then remove the cover plate & oil filler plug. A broad-bladed screwdriver is required for the plug.
2. Pump the handle several times to purge air from the system.
3. Replace the oil filler plug, then turn the control valve clockwise and test the jack. If efficiency is still low, check the oil level as below.



### CHECKING THE OIL LEVEL

If the jack has been stored for long periods, check for oil leaks before use. If necessary, check the oil level as follows:

1. Ensure the jack is fully lowered by using the handle to turn the control valve fully anticlockwise.
2. Remove the cover plate and the oil filler plug.

- The oil should be almost level with the bottom of the oil filler hole.
- Oil can be topped up using Clarke Hydraulic Oil (p/no 3050830 for 1 litre).

## OIL REPLACEMENT

1. With the jack lowered, remove the cover plate and the filler plug. Tilt the jack onto its side and drain the old oil into a container.
2. Return the jack to upright and refill with hydraulic oil up to the bottom of the oil filler hole.
3. Purge any air from the system and replace the oil filler plug.
4. Dispose of old oil appropriately and be sure to wipe up any spillage.

## GENERAL CARE

1. Periodically lubricate the hinges, front wheels & rear castors with light oil.
2. Store in a dry location.
3. In the event of damage or broken components, replacements are available from Clarke Parts & Service.

## TROUBLESHOOTING

PROBLEM	CAUSE	SOLUTION
Jack will not raise to the full height.	Low oil level.	Check for leakage and top up if required.
	Air in system.	Purge air from system as described on page 5.
	O-rings worn.	Return to your Clarke dealer for overhaul.
Jack will not hold the load.	Release valve not tightly closed.	Check valve is closing fully.
	Release valve not seating.	Return to your Clarke dealer for overhaul.
	Air in system.	Purge air from system as described on page 5.
Jack does not lower when valve opened.	Cylinder over-filled with oil.	Drain off excessive oil.
	Piston or pivot arm bent or binding.	Return to your Clarke dealer for repair.
	Disconnected or broken return spring.	Return to your Clarke dealer for repair.
	Hinged components not moving freely.	Lubricate hinged joints.
Jack feels spongy when lifting.	Air trapped in system.	Purge air from system as described on page 5.

# DECLARATION OF CONFORMITY



**Clarke**<sup>®</sup>  
**INTERNATIONAL**

Hemnal Street, Epping, Essex CM16 4LG

## DECLARATION OF CONFORMITY

This is an important document and should be retained.

We hereby declare that this product(s) complies with the following directive(s):

2006/42/EC *Machinery Directive.*

The following standards have been applied to the product(s):

The technical documentation required to demonstrate that the product(s) meet(s) the requirement(s) of the aforementioned directive(s) has been compiled and is available for inspection by the relevant enforcement authorities.

The CE mark was first applied in: 2009

**Product Description:** 2.5 Tonne Quick Lift Garage Jack  
**Model number(s):** CTJ2500QLG  
**Serial / batch Number:** N/A  
**Date of Issue:** 04/01/2012

Signed:

J.A. Clarke  
Director

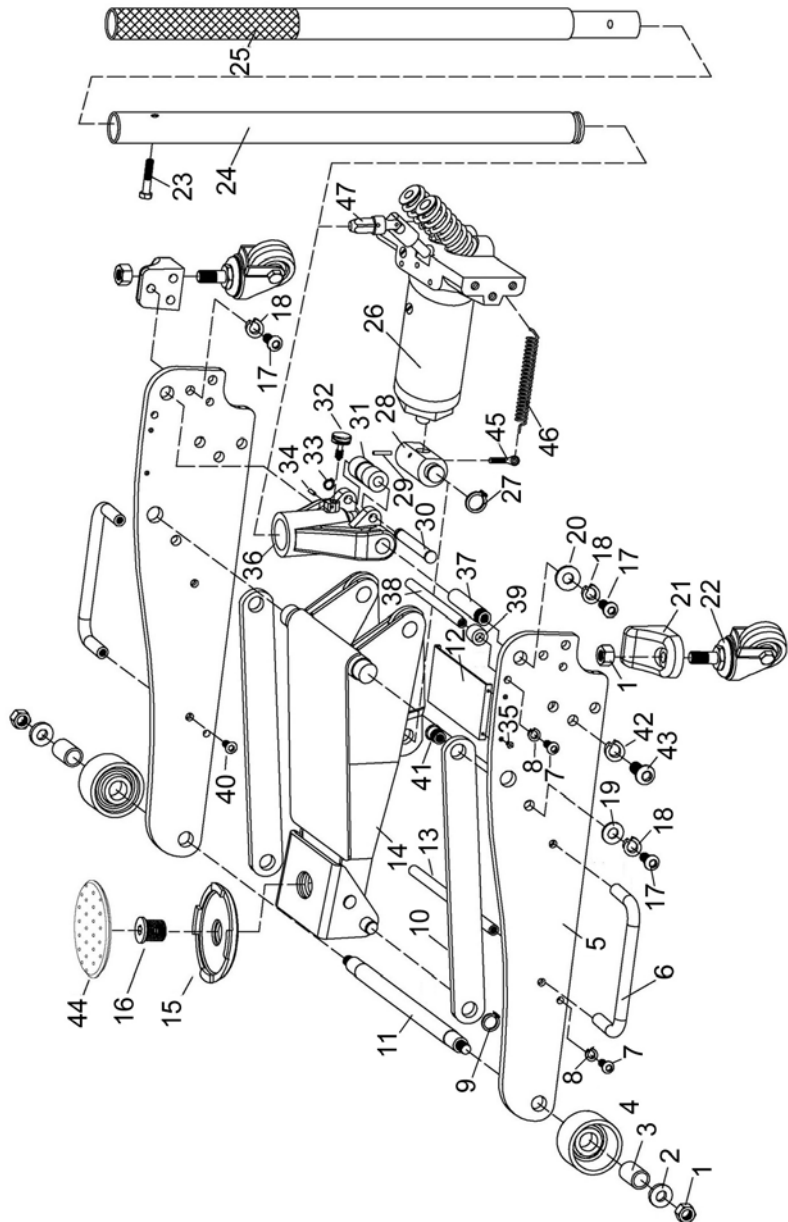
## GENERAL COMPONENT PARTS

No	Parts List	Qty	No	Description	Qty
1	Nut M12	4	25	Upper Handle	1
2	Washer	2	26	Hydraulic Pump Assembly	1
3	Bush	2	27	Circlip 20 mm	2
4	Front Wheel	2	28	Pump Conn Linkage	1
5	Frame Plate	2	29	Pin 4 x 40	1
6	Carrying Handle	2	30	Roller Pivot Shaft	1
7	S/hd Screw M8 x 25	4	31	Roller	1
8	Split Washer	4	32	Handle Set Screw	1
9	Circlip 16 mm	2	33	Circlip 12 mm	1
10	Radius Linkage	2	34	Pin 3 x 12	1
11	Front Axle	1	35	Screw M5 x 16	4
12	Cover Plate	1	36	Handle Yoke	1
13	Tie Rod	1	37	Yoke Retaining Pin	2
14	Lifting Arm Assembly	1	38	Tie Rod	1
15	Saddle	1	39	Rubber Buffer	2
16	Saddlle Fixing Screw	1	40	S/hd Screw 8 x 20	4
17	Screw M10 x 20	10	41	Pivot Bush	2
18	Spring Washer	10	42	Washer 12 mm	6
19	Large Washer	2	43	Screw M12 x 25 mm	6
20	Large Washer	2	44	Saddle Pad	1
21	Rear Castor Bracket	2	45	Retaining Clip	2
22	Rear Castor Assy	2	46	Return Spring	2
23	Bolt 6x 35	1	47	Universal Joint	1
24	Lower Handle	1			

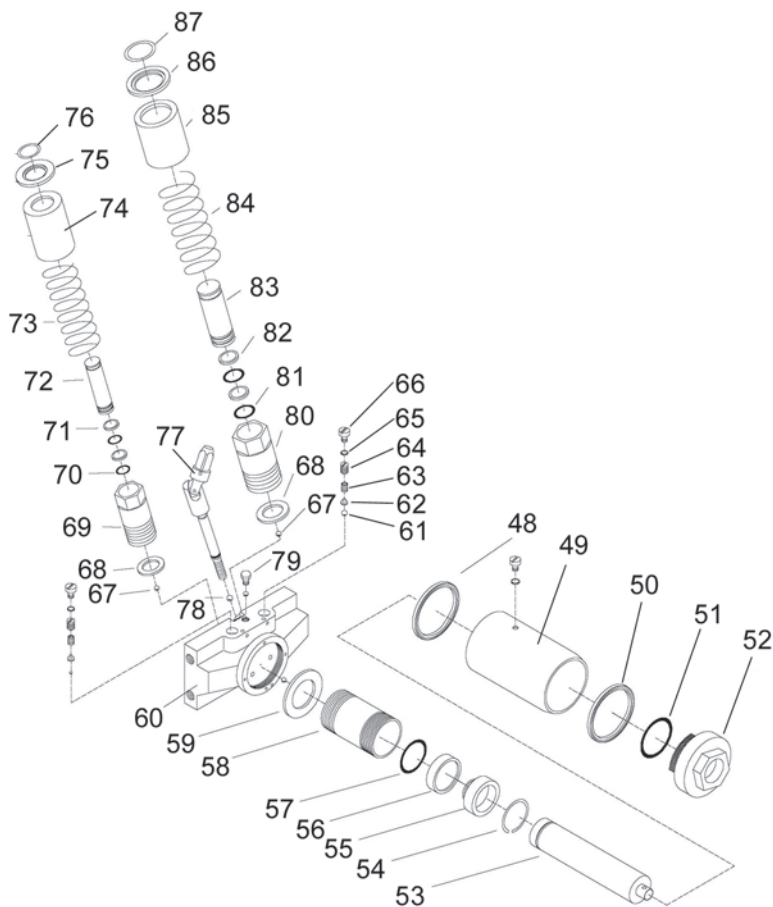
**When requesting replacement parts, please quote the prefix;  
HACTJ2500QLG, followed by the number listed above.**



# GENERAL COMPONENT PARTS



# HYDRAULIC COMPONENT PARTS



## ENVIRONMENTAL PROTECTION



One of the most damaging sources of environmental pollution is oil products. Never throw away used hydraulic oil with domestic refuse or flush it down a sink or drain. Collect any hydraulic oil in a leak proof container and take it to your local waste disposal site.

If disposing of this product or any damaged components, do not dispose of with general waste. This product contains valuable raw materials and should be taken to your local civic amenity site for recycling of metal products.

## HYDRAULIC COMPONENT PARTS

No	Parts List	Qty
48	Bottom Seal Ring #	1
49	Oil Reservoir	1
50	Top Seal Ring #	1
51	O-Ring #	1
52	Top Nut	1
53	Piston Rod	1
54	Circlip 30 mm	1
55	Piston Rod Base	1
56	Washer #	1
57	O-Ring #	1
58	Oil Holder	1
59	Copper Sealing Ring	1
60	Body Casting	1
61	Steel ball 4 mm	1
62	Ball Socket	2
63	Safety Valve Spring	2
64	Pressure Adjust Screw	2
65	O-Ring #	3
66	Screw-in Plug	3
67	Steel Ball 5 mm	5

No	Description	Qty
68	Cylinder Sealing Ring	2
69	Small Cylinder	1
70	O-Ring #	2
71	Circlip #	2
72	Piston	1
73	Piston Return Spring	1
74	Dust Cover	1
75	Return Spring Retainer	1
76	Retaining Ring 15 mm	1
77	Universal Joint	1
78	Steel Ball 6 mm	1
79	Screw Plug M6 x 12	1
80	Large Cylinder	1
81	O-Ring #	2
82	Retainer 15 mm #	2
83	Piston	1
84	Piston Return Spring	1
85	Dust Cover	1
86	Return Spring Retainer	1
87	Retainer 20 mm	1
n/a	Hydraulic Seal Kit	n/a

Items marked # are components of the Seal Kit

**When requesting replacement parts, please quote the prefix;  
HACTJ2500QLG, followed by the number listed above.**

# A SELECTION FROM THE VAST RANGE OF

# Clarke®

## QUALITY PRODUCTS

### AIR COMPRESSORS

From DIY to industrial, Plus air tools, spray guns and accessories.

### GENERATORS

Prime duty or emergency standby for business, home and leisure.

### POWER WASHERS

Hot and cold, electric and engine driven - we have what you need

### WELDERS

Mig, Arc, Tig and Spot. From DIY to auto/industrial.

### METALWORKING

Drills, grinders and saws for DIY and professional use.

### WOODWORKING

Saws, sanders, lathes, mortisers and dust extraction.

### HYDRAULICS

Cranes, body repair kits, transmission jacks for all types of workshop use.

### WATER PUMPS

Submersible, electric and engine driven for DIY, agriculture and industry.

### POWER TOOLS

Angle grinders, cordless drill sets, saws and sanders.

### STARTERS/CHARGERS

All sizes for car and commercial use.



**PARTS & SERVICE: 020 8988 7400**  
E-mail: [Parts@clarkeinternational.com](mailto:Parts@clarkeinternational.com) or [Service@clarkeinternational.com](mailto:Service@clarkeinternational.com)

**SALES: UK 01992 565333 or Export 00 44 (0)1992 565335**

**Clarke** INTERNATIONAL Hemnall Street, Epping, Essex CM16 4LG  
[www.clarkeinternational.com](http://www.clarkeinternational.com)